



# PITKIN COUNTY HEALTHY RIVERS AND STREAMS RICD

The Healthy Rivers Whitewater Park is located on the Roaring Fork River in Pitkin County, just upstream of Basalt, Colorado. Construction on the Pitkin County Healthy Rivers and Streams Board sponsored project was complete in spring of 2017. The



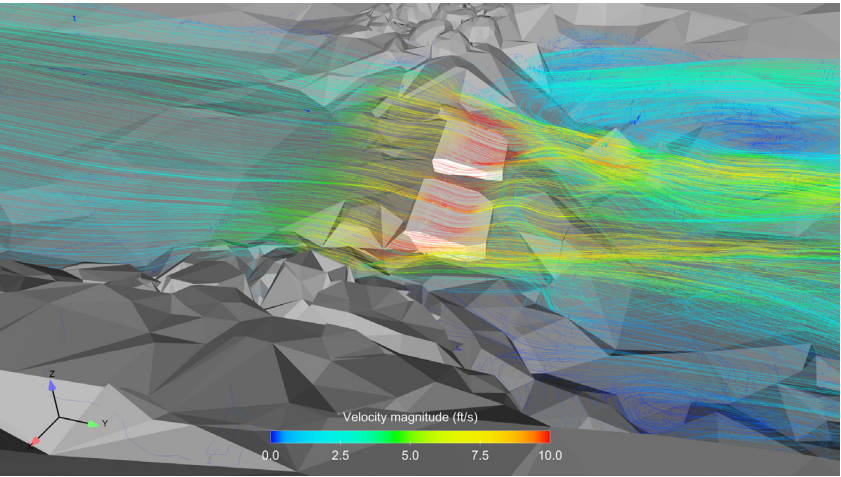
project includes two recreational whitewater features, 250 feet of reconstructed riverbank and six bank attached vanes. The Board sought to protect water of the Roaring Fork River by implementing a Recreational In-Channel Diversion, or RICD, water right. Colorado's western slope faces increasing demands as populations grow around the state. Pitkin County and the Board received the conditional water right and hired RiverRestoration to plan, design, permit and perform construction oversight of the project. The Pitkin County Healthy Rivers project represents much more than a kayak play park. It secures a future that keeps seasonal flows in the Roaring Fork, maintains healthy river ecology, and adds to diverse recreational resources present in the Roaring Fork Valley.





RiverRestoration was the engineer of record on the project and led or participated in all aspects of the project development, including: topographic and hydrographic survey, planning and conceptual design, stakeholder and general public involvement, preliminary design and permitting, final design and bid support and construction oversight. The team is currently leading a five year monitoring and adaptive management effort for the project post-construction.

RiverRestoration overcame a number of challenges during the development and implementation of the project. The team worked extensively with a large and diverse group of stakeholders that had competing goals to develop a solution everyone was satisfied with. RiverRestoration navigated the project through a complicated permitting process by demonstrating the ability of the wave features to provide fish passage and minimize habitat impacts using 2D and 3D hydraulic modeling.



The project had a successful first year. The bouldered bank and bank attached vanes have stabilized a reach of the river that had undergone significant changes in the past decade.



The two wave features provided a whitewater recreational opportunity for locals and visitors, including use by freestyle kayak instructors and commercial rafting companies. Non-boaters have also flocked to the project, picnicking and hanging out, watching kayakers and other river users, or angling in the pools created by the features.

